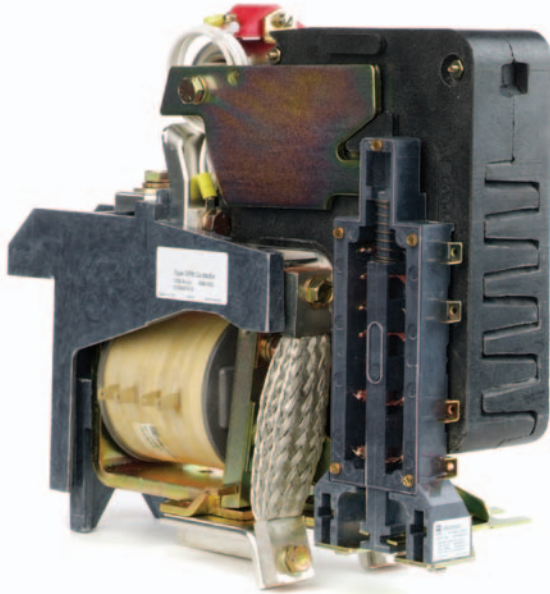


DPM 750V DC control contactors



The DPM 750V DC definite purpose contactor from Eaton's Electrical Sector has been designed to meet severe environmental and vibration conditions found in your worst applications, including railway system applications. The contactor is of unit construction, assembled on a molded insulated base, providing maximum performance in minimum space.

Eaton's rugged, high-performance DC control contactors are excellent for industries demanding reliable control devices.

The customer benefits and values offered by the DPM DC control contactors include:

- The mechanical interlock prevents the contactor from closing in the absence of the arc box or when the arc box is not properly installed, ensuring the safety of the application
- Continuous-duty magnet coils with variety of voltages (28–600 Vdc) to facilitate seamless interface with existing install-base and control systems
- Faston control terminals on the auxiliary contacts are ideal for connections in railway system applications
- Arc chute located on the front of the contactor eliminates need for arc clearance above the contactor, saving panel space
- Front accessibility to wear parts minimizes labor costs and time for inspection, maintenance and repair
- Auxiliary contacts available in any combination of normally open (NO) or normally closed (NC) circuits, up to a maximum of eight contacts
- Designed to mount directly on a channel or angle frame, but adaptable for mounting on a flat metal or insulated panel
- Power circuit insulating barriers are molded from glass-polyester materials with high arc and track resisting qualities

- Clearance and creepage distances meet or exceed the values established by NEMA® standards for 750V equipment, including those for auxiliary contact circuits
- Available with or without an overcurrent latching mechanism to prevent opening under heavy overload currents. When the line current returns to normal, the overcurrent latch disengages

Electrical ratings

- Contactor rating
 - Voltage rating is 750 Vdc
 - Continuous and interrupting current rating is 1250A
 - Main pole configuration is SPNO
- Interlock rating (25–600 Vdc)
 - Make: 250 VA
 - Break: 250 VA
 - Carry: 10A

Endurance ratings

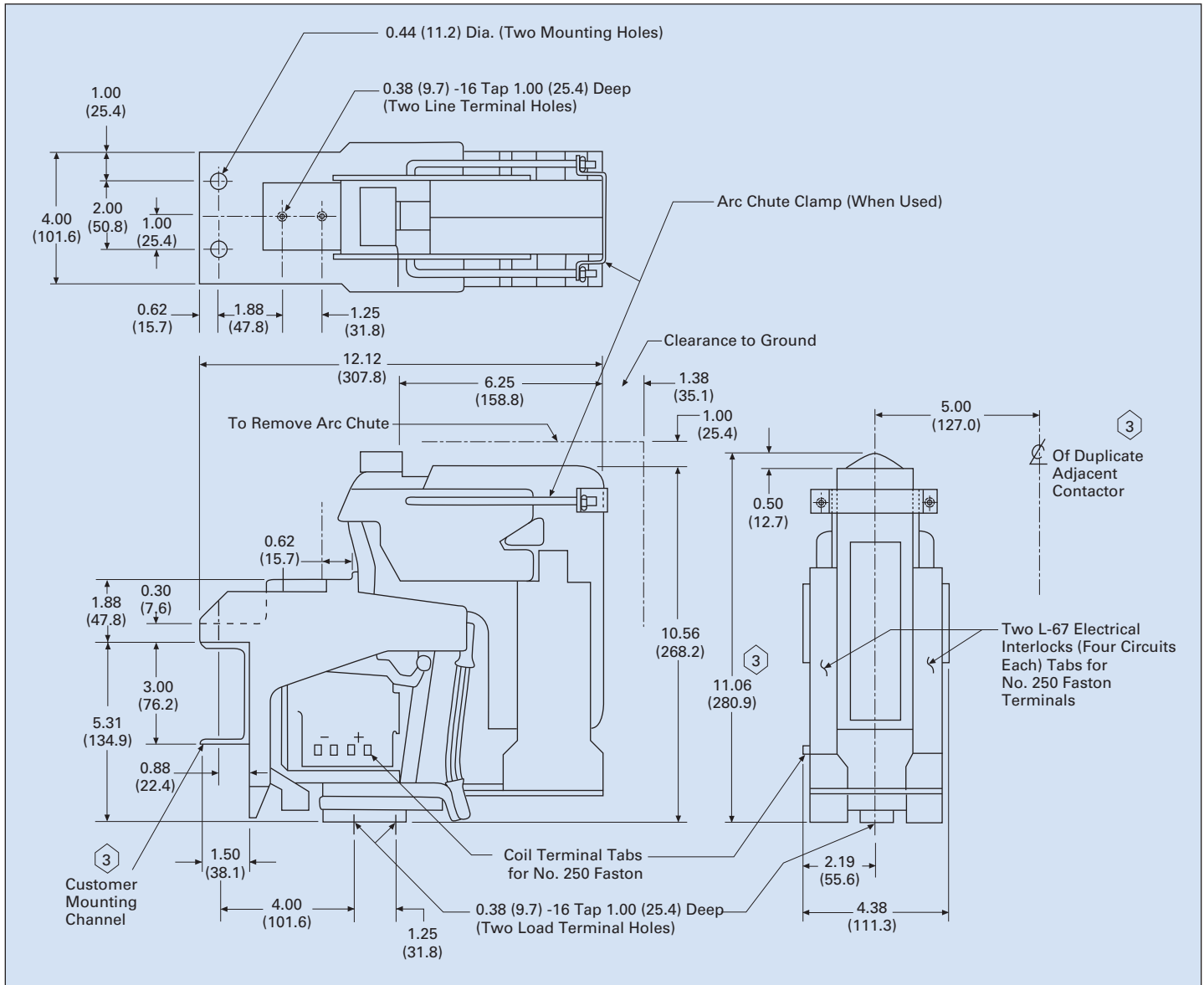
- Mechanical life is 1 million operations

Environmental ratings

- Operating temperature: –40 to +55°C
- Storage temperature: –40 to +65°C



Powering Business Worldwide



Eaton Corporation
 Electrical Sector
 1111 Superior Ave.
 Cleveland, OH 44114
 United States
 877-ETN-CARE (877-386-2273)
 Eaton.com

© 2011 Eaton Corporation
 All Rights Reserved
 Printed in USA
 Publication No. PA05803003E / Z11030
 May 2011

Eaton is a registered trademark of Eaton Corporation.

All other trademarks are property of their respective owners.